



**PUBLIC**



a pocket  
guide



**ART**

*in*



**SHAKER**



**HEIGHTS**



1

**Larchmere Bike Racks, 2013 | Tom Hubbard**  
Larchmere Historic District

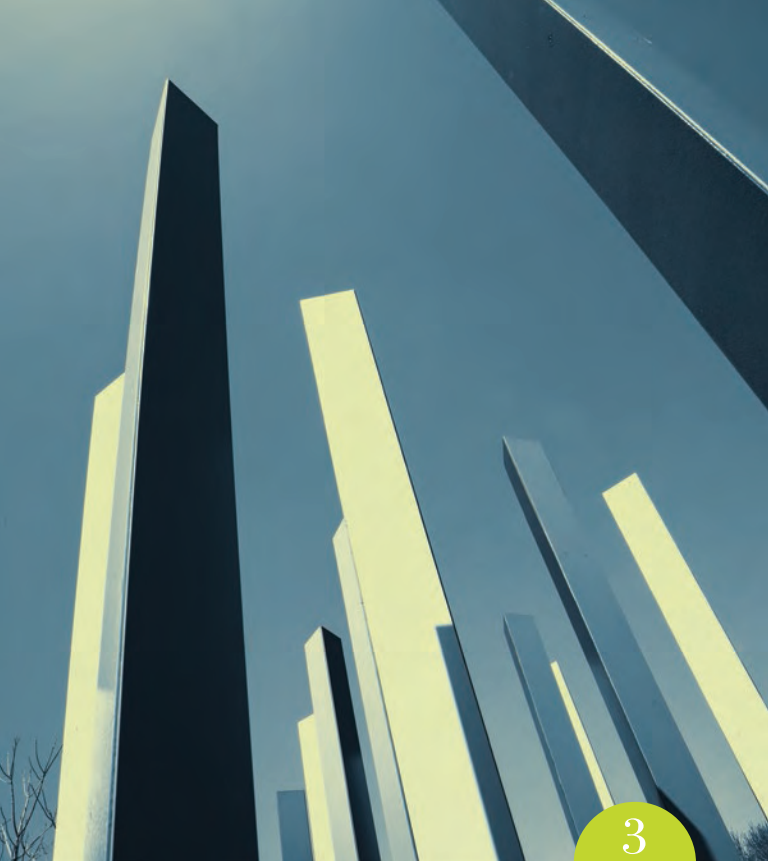
These sculptures reference Larchmere's history as an arts and antiques district. Each bike rack is shaped like one of five classic wooden chair-back styles. Twenty-five racks, installed as part of a streetscape improvement project, are located along the Larchmere commercial district spanning Cleveland and Shaker Heights.

Larchmere Book Mural, 2011 | Gene Epstein  
Larchmere Historic District

This large photographic mural is an homage to books and community. The public provided suggestions for the titles included in the project. The artist then photographed the selected titles and compiled the images, which were printed and mounted on the side of Loganberry Books.

2





3

**Colorfield, 2013 | Mark Reigelman II**  
Onaway Road median, just west of Van Aken Boulevard

This installation includes colorful triangular stainless steel posts painted a different color on each face. The artwork varies in appearance, depending on the viewer's perspective. Colorfield serves as a gateway to the Ludlow neighborhood and the work represents the spectrum of people who call that area home. A sister piece is placed on Ludlow's Cleveland side at Hampton and South Woodland roads.

**Railway Dream, 2015 | Rachel Slick**  
Lee/Van Aken RTA Station

Slick said this piece is inspired by “the beauty of trains and machinery in the age of industry,” and is further influenced by Craftsman style architecture in Shaker Heights and art nouveau sculpture in Cleveland. The piece was commissioned as part of the Greater Cleveland Regional Transit Authority’s Arts in Transit program, in which one percent of a project’s construction budgets is dedicated to public art.





5

**Cloud Monoliths, 2015 | Stephen Manka**  
Lee Road and Lomond Boulevard

Two 16-foot monolithic blocks are carved out in the center to reveal a silver lining. The sculpture is an imagined cross section of a cloud that is anchored to the ground for viewers to investigate and experience.

**Metal Banners, 2007** | Gauri Torgalkar  
Chagrin Boulevard/Shaker Commons and Shaker Towne Centre

These aluminum banners feature a variety of custom designs depicting activities found in the surrounding neighborhood (shopping, commuting, carrying library books, etc.) and nature-related imagery.

6





7

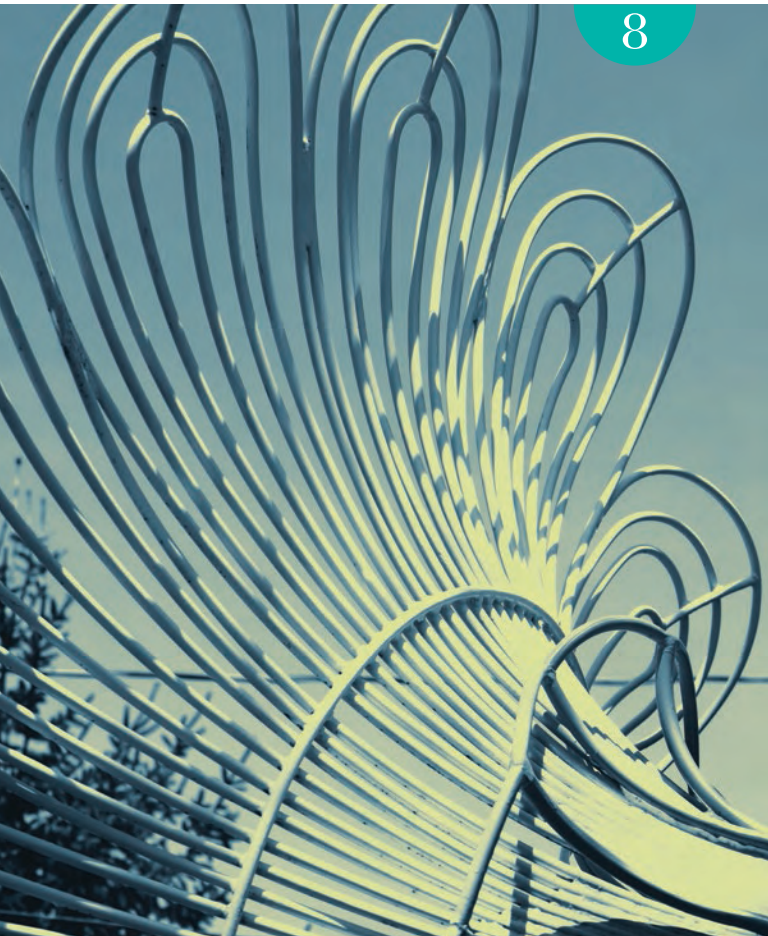
**Master Marr's Taekwon-do Mural, 2015**  
Samantha Butler and Megan Jones  
16706 Chagrin Boulevard

Shaker Heights High School students Butler and Jones (both Class of 2015) painted this Asian-inspired mural for their Senior Project. The idea came from Master Marr's owners James Marr and Elaine Bayless – Sherwin Williams donated paint for the project. This was the first SHHS Senior Project mural painted by students in the public realm.

**Trumpet Flower, 2011 | Mike Moritz**  
Kenyon Walkway, connecting Shaker Commons and Kenyon Road

Moritz intended this whimsical, nine-foot painted steel sculpture to “bring color to a snowy day and added vibrancy to a fun-filled summer.”

8



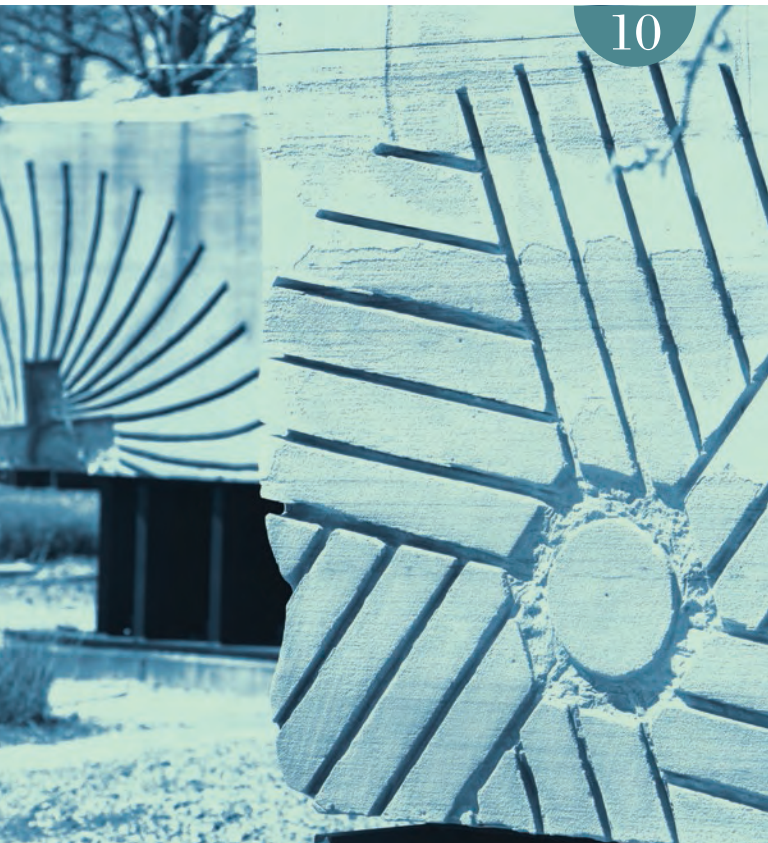


9

**Reeds of Light, 2008 | Stephen Manka**  
Winslow Court between Van Aken and Chagrin boulevards

These sculptures feature groups of tall steel rods inspired by wild grasses. The rods are illuminated from below with a rotating program of colored light.

Grist Mill alludes to the ruins of the Shaker settlements from which the City draws its name. Sandstone blocks, raised up on steel tables, reference the remains of historic Shaker structures like the mills they used to grind grain. Each sandstone block has one face etched with designs inspired by the mechanisms and machinery that allowed these mills to operate. The other three faces showcase the large stones' heritage, displaying the cuts scored into them at the quarry from which they were mined.





**Avalon Orchard Art Fence, 2011 | Stephen Manka**  
Avalon and Kenyon roads

Alluding to windswept flora and shepherds' crooks, this fence frames the orchard's landscaping to add another layer of textural depth to the space. Rather than obscure the view of the park's vegetation, the metalwork is staggered, enabling flowers and shrubs to poke through.

**Winslow Road Brackets, 2011 | McKnight & Associates**  
Winslow Road Historic District

These custom-designed brackets help identify and celebrate the Winslow Road Historic District, one of the oldest streets in the city. Flower baskets hang from the brackets in the warmer months. These decorative elements were installed as part of a broader set of streetscape improvements to the district.

12



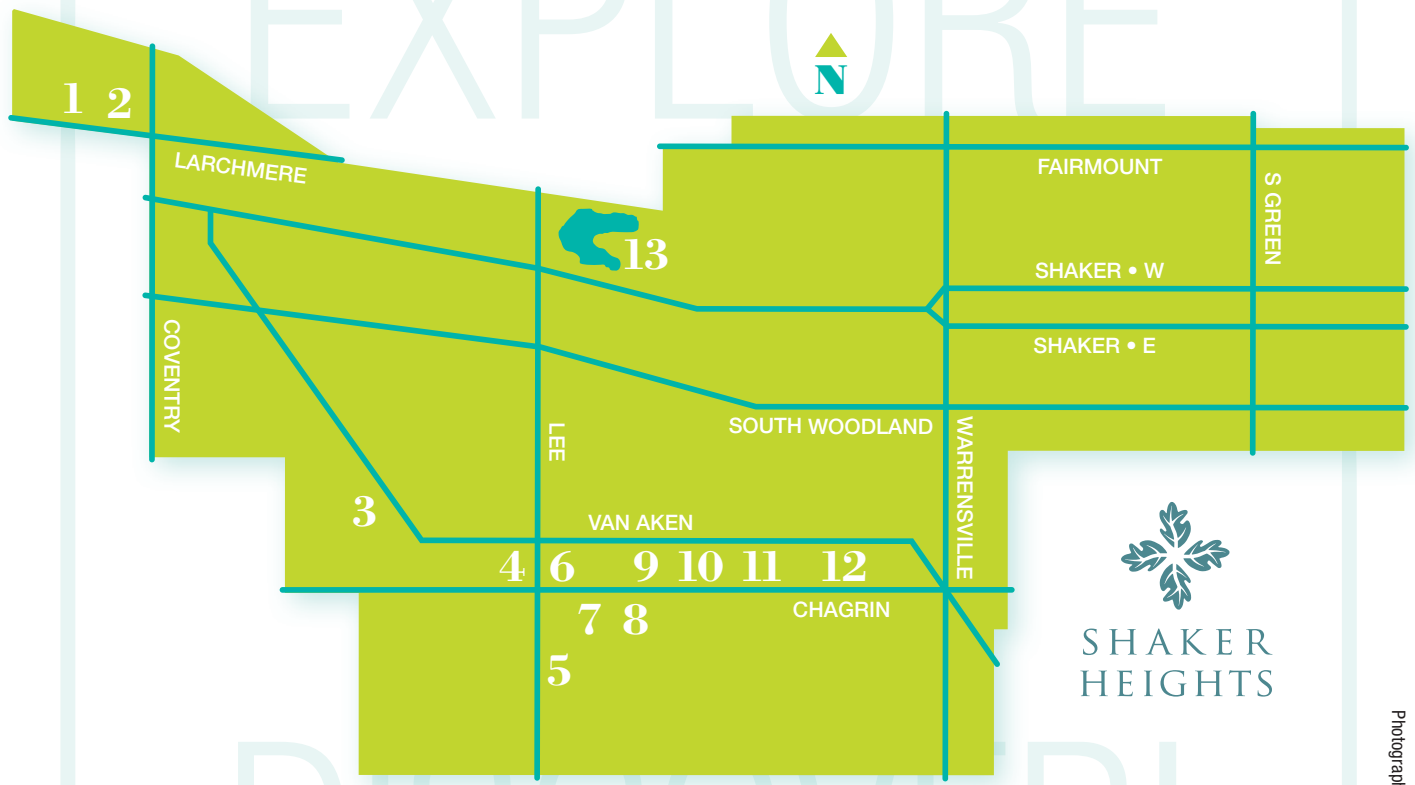


13

**Arachne Weaves Her Web, 2008 | Debbie Apple-Presser**  
Horseshoe Lake Park near the Treehouse

This large-scale web and spider consists of recycled materials including bottlecaps, cork, broom bristles, and wire. It was originally designed for an exhibit at Stan Hywet Hall and Gardens and was purchased by the City of Shaker Heights. In 2013, the original web succumbed to wear and tear. The City commissioned a new web, which was installed in Horseshoe Lake Park in 2014.

EXPLORE



SHAKER  
HEIGHTS

1 2

LARCHMERE

COVENTRY

3

LEE

4

5

6

7

8

VAN AKEN

13

SOUTH WOODLAND

CHAGRIN

WARRENSVILLE

FAIRMOUNT

SHAKER • W

SHAKER • E

S GREEN

DISCOVER!